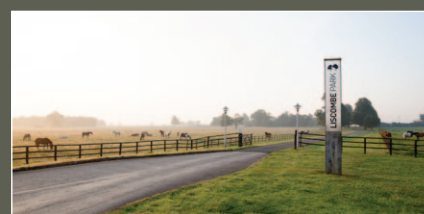




Liscombe Park

The entrance to Liscombe Park is by an attractive drive which meanders through mature trees surrounded by pasture land which delivers you to a compact office complex of modernised and new buildings with plentiful parking. Liscombe is only four minutes from the Leighton Buzzard By Pass.



Get in touch

Tel: 01296 681818
Email: info@liscombepark.co.uk

www.liscombepark.co.uk


LISCOMBE PARK

Liscombe Park Ltd
10 Media Village, Liscombe Park, Soulbury,
Leighton Buzzard, Bedfordshire, LU7 0JL



Main image: courtyard
Inset: property exterior

Refurbished office

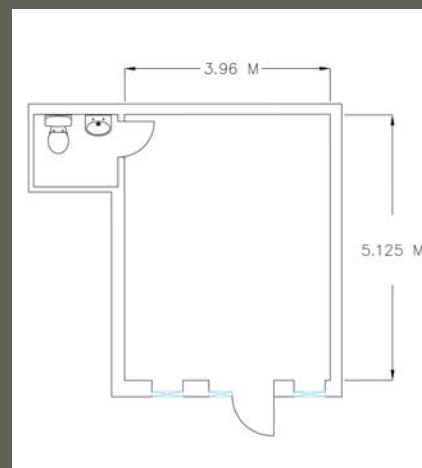
8 Media Village, Liscombe Park, LU7 0JL

2 to 3 person office with toilet, 2 private parking spaces and plentiful staff/visitor parking, security windows and doors, well insulated, business-class broadband.

Rates: contact Aylesbury Vale District Council for up to date cost - www.aylesburyvaledc.gov.uk/business/business-rates

Will accommodate	2-3 persons
Dedicated parking spaces	2
Visitor/staff parking	Yes
Toilets	1
Kitchenette	-
Kitchen	-

Other costs: buildings insurance c. £100pa, electricity, water and sewage on consumption.
Optional Extras: additional broadband if required.



Above: floor plan

Get in touch

Tel: 01296 681818
Email: info@liscombepark.co.uk

www.liscombepark.co.uk


LISCOMBE PARK

Liscombe Park Ltd
10 Media Village, Liscombe Park, Soulbury,
Leighton Buzzard, Bedfordshire, LU7 0JL



Liscombe Park Health Club

With pool, cafe, gym, sauna and fitness studio

Our quiet location brings with it excellent accessibility from Milton Keynes and Aylesbury via the recently completed Leighton Buzzard western bypass and is 10 minutes from Leighton Buzzard itself.



Liscombe Park is very easy to get to as the map and chart below illustrates.

Distances from Liscombe Park:

M1	13 miles
M25	23 miles
M40	23 miles
AYLESBURY	10 miles
BLETCHLEY	8 miles
DUNSTABLE	12 miles
HEATHROW	50 miles
HEMEL HEMPSTEAD	18 miles
LUTON	16 miles
LEIGHTON BUZZARD	3 miles
LONDON	45 miles
MILTON KEYNES	13 miles

Get in touch

Tel: 01296 681818
Email: info@liscombepark.co.uk

www.liscombepark.co.uk


LISCOMBE PARK

Liscombe Park Ltd
10 Media Village, Liscombe Park, Soulbury,
Leighton Buzzard, Bedfordshire, LU7 0JL