

*Liscombe Park*

The entrance to Liscombe Park is by an attractive drive which meanders through mature trees surrounded by pasture land which delivers you to a compact office complex of modernised and new buildings with plentiful parking. Liscombe is only four minutes from the Leighton Buzzard By Pass.

*Get in touch*

Tel: 01296 681818  
Email: [info@liscombepark.co.uk](mailto:info@liscombepark.co.uk)

[www.liscombepark.co.uk](http://www.liscombepark.co.uk)

 LISCOMBE PARK

Liscombe Park Ltd  
10 Media Village, Liscombe Park, Soulbury,  
Leighton Buzzard, Bedfordshire, LU7 0JL



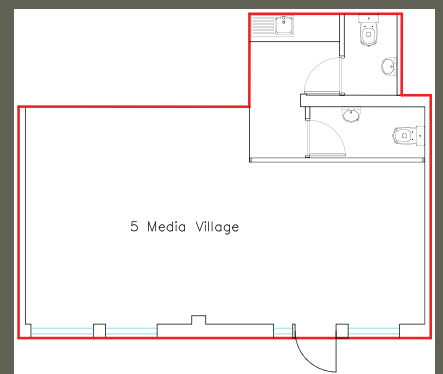
*Refurbished office*

**5 Media Village, Liscombe Park, LU7 0JL**

Up to 8 person office with kitchenette, male and female toilets, 2 adjacent private parking spaces and plentiful staff/visitor parking, security windows and doors, well insulated, business-class broadband. Rates: contact Aylesbury Vale District Council for up to date cost - [www.aylesburyvaledc.gov.uk/section/business-rates](http://www.aylesburyvaledc.gov.uk/section/business-rates)

Will accommodate	<b>8 people</b>
Dedicated parking spaces	<b>2</b>
Visitor/staff parking	<b>Yes</b>
Toilets	<b>2</b>
Kitchenette	<b>✓</b>
Kitchen	<b>-</b>

Other costs: buildings insurance c. £100pa, electricity, water and sewage on consumption. Optional Extras: additional broadband if required.



Main image: courtyard  
Inset: property exterior  
Top: property exterior  
Above: floor plan

*Get in touch*

Tel: 01296 681818  
Email: [info@liscombepark.co.uk](mailto:info@liscombepark.co.uk)

[www.liscombepark.co.uk](http://www.liscombepark.co.uk)



LISCOMBE PARK

Property Profile



## Liscombe Park

Our quiet location brings with it excellent accessibility from Milton Keynes and Aylesbury via the recently completed Leighton Buzzard western bypass and is 10 minutes from Leighton Buzzard itself.



*Liscombe Park is very easy to get to as the map and chart below illustrates.*

### Distances from Liscombe Park:

M1	13 miles
M25	23 miles
M40	23 miles
AYLESBURY	10 miles
BLETCHLEY	8 miles
DUNSTABLE	12 miles
HEATHROW	50 miles
HEMEL HEMPSTEAD	18 miles
LUTON	16 miles
LEIGHTON BUZZARD	3 miles
LONDON	45 miles
MILTON KEYNES	13 miles

*Get in touch*

Tel: 01296 681818  
Email: [info@liscombepark.co.uk](mailto:info@liscombepark.co.uk)

[www.liscombepark.co.uk](http://www.liscombepark.co.uk)



LISCOMBE PARK

Liscombe Park Ltd  
10 Media Village, Liscombe Park, Soulbury,  
Leighton Buzzard, Bedfordshire, LU7 0JL